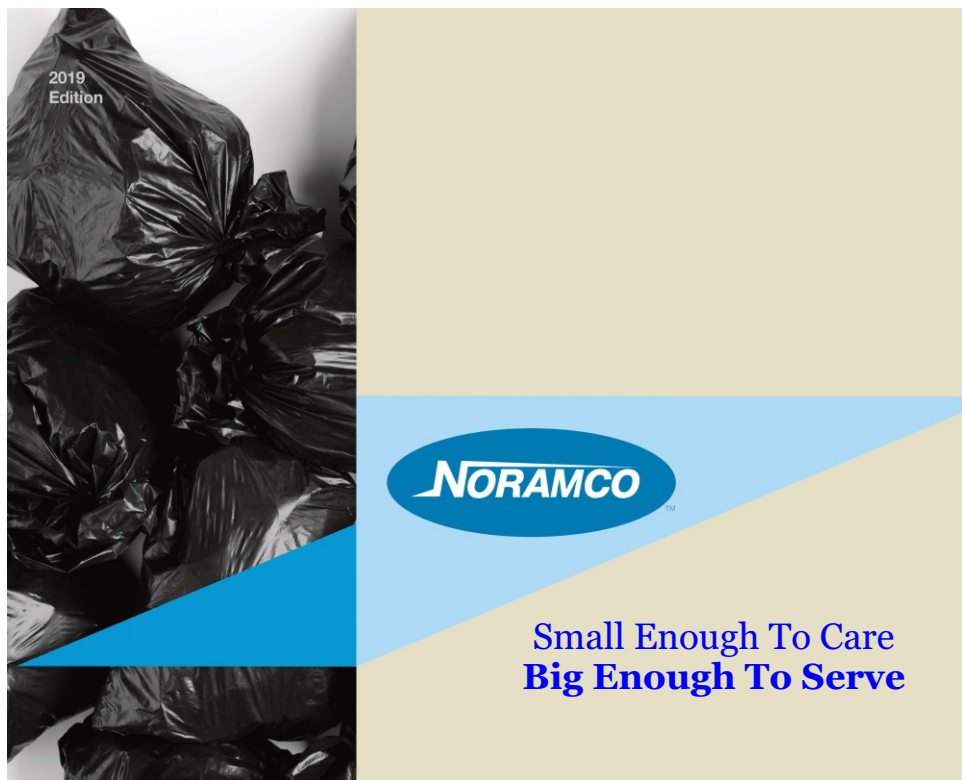


**Shop - Save - Smile!**



**Manufacturers of quality can liners and custom packaging.**

**\$ave Smart**  
Products.com  
[www.savesmartproducts.com](http://www.savesmartproducts.com)  
678-910-6979

**Safety, Sanitary, Janitorial & Specialty Supplies**

# Who We Are

**Manufacturers of High Quality Polyethylene Can Liners and Plastic Bags**

## Our Company

- Founded by James Popela
- Serving the can liner needs of distributors since 1986
- Committed to providing a rewarding work environment for our employees

## Our Focus

- We strive to provide our customers with quality and cost-competitive products
- We adapt to our customers' needs and build lasting partnerships
- We exceed customers' expectations through support and service

## Our Values

- Safe work environment
- Highest quality raw materials and quality standards
- Continuous improvements in the production process
- Passion for our business

## Table of Contents

How to Shop Our Catalog.....	2
Item Options for Ordering Accurately.....	3
Useful Information – How to Measure Container.....	3
Useful Information – Can Liner Guide.....	4
Useful Information – Sizing Guide.....	5
Useful Information – Bottom Seals.....	5
Product Labels.....	6
Private Labels.....	6
Company Information.....	7
TruFit Series.....	8
Premium LLD (clear).....	9
Premium LLD (black & white).....	10
Recycled PGB Series.....	11
Recycled T Series.....	12
Premium HDPE (natural), Premium HDPE (black).....	13
Value HDPE (natural).....	14
RCoEx, Blue Recycle Series, and Specialty Bags.....	15
Medical Liners.....	16
Biodegradable Liners.....	17
Noramco Tuff Contractor Bags.....	18
HDPE / LLDPE Custom Capabilities.....	19

# How to shop our catalog

Here's what you need to know

We take pride in offering a full product line for any application. From high density and linear low density trash bags, to poly food bags, biodegradable liners, and custom products, we offer a wide variety to satisfy even the most demanding needs of our customers.

**1** **STEP 1:**  
**Measure Your Container for Best Fitting Liner**

**2** **STEP 2:**  
**Choose the Right Size**

**3** **STEP 3:**  
**Choose Resin Type**

**4** **STEP 4:**  
**Choose Bag Strength**



Wide Variety.  
National Support.

# Our Products

- Commercial Can Liners
  - Drum Liners
  - Box Liners
  - Gaylord Liners
- Pallet Covers
  - Poly Food Bags
  - Bun Rack Covers
  - Contractor Bags
- Medical Bags
  - Biodegradable Can Liners
  - Tubing
  - CF Sheeting
  - And More!

**Key:**  
Understanding item options for ordering accurately:

Specify size to fit your can

↓

How many cases per pallet

↓

ITEM NUMBER	BAG WIDTH / LENGTH		COLOR	BAG GAUGE	CASE COUNT	CASE PACK PUT UP	MAX. DRY LOAD CAP.	GALLON CAP.	SKID COUNT	ROLLS/ CASE	BAGS/ ROLL
RST2423XLC	24	23	Clear	0.35	1000	CORELESS	10 lbs	7-10	84	20	50
RST24236C	24	23	Clear	0.60	500	CORELESS	20 lbs	7-10	70	10	50
RST2432XLC	24	32	Clear	0.35	1000	CORELESS	10 lbs	12-16	77	20	50

Thickness of bag for best performance

↑

Maximum capacity bag can hold

↑

Call us at **216.531.3400**

## STEP 1: Measure Your Container for Best Fitting Liner

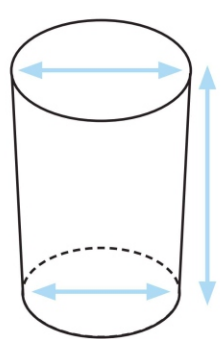
### ■ Measure Your Container for Best Fitting Liner\*

**Square container:**

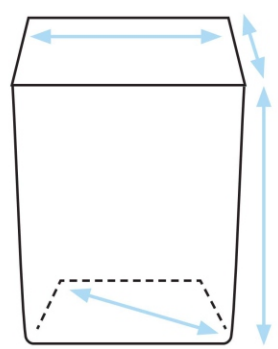
- Measure all 4 sides
- Measure the base diagonal
- Measure the vertical length

**Round container:**

- Measure the base and top diameters
- Measure the vertical length



\*This formula builds in overhang  
Measurement in inches



### ■ Calculate the Liner Size

**Square container:**

- Liner width = sum of all 4 sides ÷ 2
- Liner length = container length + (base diagonal ÷ 2) + 4"

**Round container:**

- Liner width = (top diameter x 3.14) ÷ 2
- Liner length = container length + (base diameter ÷ 2) + 4

■ **With these dimensions,** you are ready to choose the right bag width/length.

# 2 STEP 2: Choose the Right Size

## Can Liner Guide and Suggested Bag Size



**Rectangular Wastebasket**  
3.5 Gallon  
LLD 20" x 21"  
HD 20" x 22"

7 Gallon  
LLD 24" x 23"  
HD 24" x 24"

10 Gallon  
LLD 24" x 32"  
HD 24" x 33" or 24" x 27"



**Round Wastebasket**  
6.5 Gallon  
LLD 24" x 23" or 24" x 32"  
HD 24" x 24" or 24" x 27"

10 Gallon  
LLD 24" x 32"  
HD 24" x 33"



**Profile Series™\***  
15 Gallon  
LLD 33" x 39" or 30" x 45"  
HD 33" x 40"



**Half Round Receptacle**  
21 Gallon  
LLD 30" x 43" or 26" x 46"  
or 33" x 39"  
HD 30" x 43" or 33" x 40"  
**Available in TruFit**



**Round Base Receptacle**  
22 Gallon  
LLD 30" x 43" or 26" x 42"  
or 33" x 39"  
HD 30" x 43" or 33" x 40"  
**Available in TruFit**



**Slim Jim**  
23 Gallon  
LLD 30" x 43" or 33" x 39"  
HD 30" x 43" or 33" x 40"  
**Available in TruFit**



**Wastemaster™\***  
24 Gallon  
Without Rigid Liner  
LLD 40" x 46" or 37" x 44"  
HD 37" x 46" or 40" x 48"



**Round Top**  
15 Gallon  
Inner Rigid Liner  
LLD 30" x 36" or 26" x 42"  
HD 30" x 37"

21 Gallon Inner Rigid Liner  
LLD 30" x 43" or 33" x 39"  
HD 30" x 43" or 33" x 40"

25 Gallon  
Without Rigid Liner  
LLD 40" x 46" or 37" x 44"  
HD 37" x 46" or 40" x 48"



**Indoor Square Container**  
19 Gallon  
LLD 30" x 36"  
HD 30" x 37"

23 Gallon  
LLD 33" x 39" or 30" x 43"  
HD 30" x 40" or 30" x 43"  
**Available in TruFit**

35 Gallon  
LLD 40" x 46" or 37" x 44"  
HD 40" x 48" or 37" x 46"



**Ranger®\***  
35 Gallon  
Inner Rigid Liner  
LLD 33" x 39"  
HD 33" x 40"

45 Gallon  
Inner Rigid Liner  
LLD 40" x 46" or 37" x 44"  
HD 40" x 48" or 37" x 46"



**Landmark Series™\*\***  
35 Gallon  
Inner Rigid Liner  
LLD 44" x 55"  
HD 37" x 46"

45 Gallon  
Inner Rigid Liner  
LLD 40" x 46"  
HD 40" x 48" or 37" x 46"



**Square Receptacle**  
28 Gallon  
LLD 43" x 47"  
HD 43" x 48"

32 Gallon  
LLD 43" x 47"  
HD 43" x 48"

40 Gallon  
LLD 40" x 46" or 43" x 48"  
HD 40" x 48" or 43" x 48"



**Round Receptacle**  
10 Gallon  
LLD 24" x 32"  
HD 24" x 33" or 24" x 27"

20 Gallon  
LLD 30" x 43" or 30" x 36"  
HD 30" x 37"

32 Gallon  
LLD 33" x 45" 37" x 44"  
or 40" x 46"  
HD 37" x 46" or 40" x 48"  
**Available in TruFit**



**Round Receptacle, cont.**  
44 Gallon  
LLD 37" x 50" or 40" x 46"  
HD 40" x 48" or 37" x 46"  
**Available in TruFit**

55 Gallon  
LLD 43" x 47" or 44" x 55"  
HD 43" x 48"  
**Available in TruFit**



**Drum**  
55 Gallon  
LLD 38" x 58"  
HD 38" x 60"



**Glutton®\***  
56 Gallon  
Without Rigid Liner  
LLD 43" x 47"  
HD 43" x 48"



**King Kan™\*\***  
35 Gallon  
LLD 44" X 55"  
HD 38" x 60"

50 Gallon  
Inner Rigid Liner  
LLD 43" x 47"  
or 44" x 55"  
HD 43" x 48"

65 Gallon  
Inner Rigid Liner  
LLD 43" x 47"  
HD 43" x 48"  
**Available in TruFit**

\*Registered trademark of Rubbermaid Products, Inc.  
\*\*Registered trademark of Continental Manufacturing Company

# 3 STEP 3: Choose Resin Type

	Linear Low Density LLD	High Density HD
<b>Resin Type</b>	Recommended for sharp or rough objects. Offer great stretch and tear resistance.	Recommended for heavy, non sharp objects. Offer significant material and cost savings.
<b>Application</b>	Yard clean up, glass, objects with rough edges. Plastic eating utensils, food scraps with sharp edges. Used in multiple applications (medical bags, contractor bags, food bags, etc.)	Paper plates, cups, paper, office waste. Heavy objects with non-sharp edges.
<b>Stock Categories</b>	ST Series, PGB Series, T Series, Food Bags, Medical Bags, COEX Bags	R Series, CSR Series, RCH Series

# 4 STEP 4: Choose Bag Strength

## Sizing Guide

Determine the average amount of weight that is being put into the container. Use chart below to determine the gauge.

HIGH DENSITY	
Micron	Max Load
6	15 lbs
8	20 lbs
10	30 lbs
13	50 lbs
14	55 lbs
16	70 lbs
17	75 lbs
19	80 lbs
22	85 lbs

LINEAR LOW DENSITY Recycled Blend	
Gauge	Max Load
<b>PGB Series</b>	
1.00	65 lbs
1.25	75 lbs
1.50	80 lbs
2.00	95 lbs
<b>T Bag Series</b>	
H	65 lbs
XH	75 lbs
XXH	85 lbs

LINEAR LOW DENSITY All Virgin Series Liners	
Gauge	Max Load
0.35	10 lbs
0.60	40 lbs
0.70	50 lbs
0.80	60 lbs
0.90	75 lbs
1.00	85 lbs
1.30	100 lbs
1.50	110 lbs
1.70	125 lbs
2.20	150 lbs

LINEAR LOW DENSITY Co-extruded	
Gauge	Max Load
XH	75 lbs
XXH	90 lbs

### Can Liner Formula

#### Linear Low Density

Length x Width x Gauge (in mils) ÷ 15 ÷ 1000 x bags per case = case weight

#### High Density

Length x Width x Gauge (in microns) ÷ 15 ÷ 25.4 ÷ 1000 x bags per case = case weight

#### Microns to Mils Formula

Divide the microns by 25.4 to arrive at mil thickness.

#### Mils to Microns Formula

Multiply the mils by 25.4 to arrive at mic thickness.

<b>Mil Thickness</b>	.23	.27	.31	.35	.39	.43	.47	.51	.55	.59	.62	.66	.70	.74	.78	.82	.86	.90	.94	.98	1.00
<b>Micron Equivalent</b>	6	7	8	9	10	11	12	13	14	15	16	17	18	19	20	21	22	23	24	25	25.4

## Bottom Seals

Most stock products have Star Seal, which offers the strongest support and leak resistance. Heavy duty or specialty custom products can be made with Gusset or Flat Seal.



### High Performance Star Seal

- Most common type
- Eliminates gaps where leaks can occur
- Distributes weight evenly
- Maximizes carrying capacity
- Sized in two dimensions  
Example: 38 x 58



### Flat Seal

- Potential to leak liquids from the corners
- Do not conform as well to the shape of can
- Sized in two dimensions  
Example: 38 x 58



### Gusset Seal

- Flat-style bag design
- Both sides tucked in to form gussets  
- Sealed through four layers of film (the middle of the bag has only two sealed layers)  
- Sized in three dimensions  
Example: 23 x 17 x 46

# Easy Labeling System

## Typical Industry Labels

item number	→	<b>PGB-6141</b>	<b>LLDPE</b>	←	material type
size	→	<b>38" X 58"</b>	<b>LOGO</b>		
color	→	<b>1 MIL Black</b>		←	SCS certification for recycled content
count/packaging type	→	<b>100/CS Folded</b>	<b>MINIMUM 25% RECYCLED CONTENT PRE-CONSUMER</b>	←	case weight
gallon capacity	→	<b>55 Gallon</b>	<b>14.69 lb/cs</b>	←	quality control markers
bar code	→		<b>09/17/15 Case # 1</b>		

## Noramco's Label: Follows industry label format and is easy to read

item number	→	<b>R404816N</b>	<b>HDPE</b>		
actual size	→	<b>40" X 48"</b>			
actual cauge	→	<b>16 MIC Natural</b>			
actual count	→	<b>250/CS Coreless</b>			
actual capacity	→	<b>45 Gallon</b>			
bar code	→		<b>20.16 lb/cs</b>	←	case weight
			<b>09/17/15 Case # 2</b>		

## Private Label

Make your company stand out with a private label.

- 35 case minimum for private label
- Available in black and white or multi-color
- Small up-charge for multi-color print
- Submit your company logo, artwork and desired text

YOUR LOGO HERE

GEN30N 30X37 CLEAR  
13 MIC 30 GAL 500/CS

Toll Free: 800-123-456-7890  
www.yourwebsite.com

11/17/15 CASE# 44

Case# 9991

YOUR LOGO HERE

PHONE: 123-456-5985

FAX: 123-456-5810

BP403			
SIZE	40 X 50	COLOR	BLACK
QTY	100	USE	XXHEAVY
CAP	55 GAL		

Sep/19/2013



## Our Commitment

**Customer Support** Our team of dedicated inside sales specialists and regional representatives will ensure you get the support and coverage you need.

**Flexibility** We take pride in meeting our customers' unique needs. We offer low minimums and quick turnaround.

**Stability** As a privately owned company, we cut red tape and remain a reliable supplier to regional and national distributors.

**Sustainability** We are proud to offer a variety of commercial can liners that are certified for recycled content, in addition to a full line of biodegradable trash bags. Let's be smart about recycling and reducing waste.

**Education** It's not rocket science, but there are some fundamentals in selling trash bags and increasing your profits. Let us help you be the expert!

Though we have grown over the years, we have never forgotten our humble beginnings. We invest heavily into improving our service and production process, but still maintain our headquarters at the building where James Popela started some 30 years ago.



## Ordering

- Special runs available with 1,200 lb minimum per SKU
- Average lead time is 10-14 days on stock items, and may be longer for custom items
- Orders are preferred in multiples of seven for better pallet configuration
- HDPE liners are on coreless mini rolls: Some can be folded, but minimum and price adjustments apply
- LLDPE and Repro can be folded or coreless
- EDI Compliant
- 250 case minimum for prepaid freight
- Private Label Opportunities

## Box and pallet information

- Virgin HDPE and LLDPE liners are packed in a plain white box
- Repro and Biodegradable liners are packed in a brown "earth-friendly" box
- Boxes are stacked seven per layer
- All pallets are shrink wrapped
- Wrap-around labels available upon request
- All labels are visible from the outside

## Terms and conditions

- Invoices that are not paid 31 days after the original invoice date (except for special terms) are subject to service charges of 1% per month (12% per year).
- Specials and/or custom orders are non-returnable except for damaged or defective products.
- Prices are subject to change without notice.
- North American Plastics reserves the right to reject any order.
- Consult your sales rep or call us for more information.

## Key contacts

- James Popela, CEO
- Steve Marcum, VP of Operations  
steve.marcum@noramcobag.com
- Steven Rogers, VP of Sales  
steven.rogers@noramcobag.com
- Tom Nichols, Sales Manager  
tom.nichols@noramcobag.com
- Steve Pettrey, Sales Representative  
steve.pettrey@noramcobag.com
- James Keaton, CFO  
james.keaton@noramcobag.com



Taking the guesswork out of can liner sizes

# TruFit Series

TruFit Series bags are designed to fit and stretch among the four most common receptacle sizes. Save time and money buying only what you need and not spending extra on unneeded plastic. Our liners are offered in a variety of resins: LLDPE, HDPE and REPRO options—all high-quality plastic with a slip-free fit.

NUMBER	WIDTH	LENGTH	COLOR	BAG GAUGE	CASE COUNT	CASE PACK PUT UP	MATERIAL	RECEPTACLE
TF294414N	29	44	Natural	14 MIC	250	CORELESS	HDPE	23 GAL SLIM JIM
TF294416N	29	44	Natural	16 MIC	250	CORELESS	HDPE	23 GAL SLIM JIM
TF2944C	29	44	Clear	1 MIL	200	CORELESS	LLDPE	23 GAL SLIM JIM
TF2944HB	29	44	Black	1.2 MIL	200	CORELESS	REPRO	23 GAL SLIM JIM
TF334414N	33	44	Natural	14 MIC	250	CORELESS	HDPE	32 GAL ROUND
TF334416N	33	44	Natural	16 MIC	250	CORELESS	HDPE	32 GAL ROUND
TF3344HC	33	44	Clear	1.2 MIL	100	CORELESS	LLDPE	32 GAL ROUND
TF3344HB	33	44	Black	1.2 MIL	100	CORELESS	REPRO	32 GAL ROUND
TF375014N	37	50	Natural	14 MIC	250	CORELESS	HDPE	44 GAL ROUND
TF375016N	37	50	Natural	16 MIC	250	CORELESS	HDPE	44 GAL ROUND
TF3750HC	37	50	Clear	1.2 MIL	100	CORELESS	LLDPE	44 GAL ROUND
TF3750XHB	37	50	Black	1.5 MIL	100	CORELESS	REPRO	44 GAL ROUND
TF415416N	41	54	Natural	16 MIC	200	CORELESS	HDPE	55 GAL ROUND
TF4154XHB	41	54	Black	1.5 MIL	100	CORELESS	REPRO	55 GAL ROUND
TF5044XHB	50	44	Black	1.5 MIL	100	CORELESS	REPRO	65 GAL KING KAN



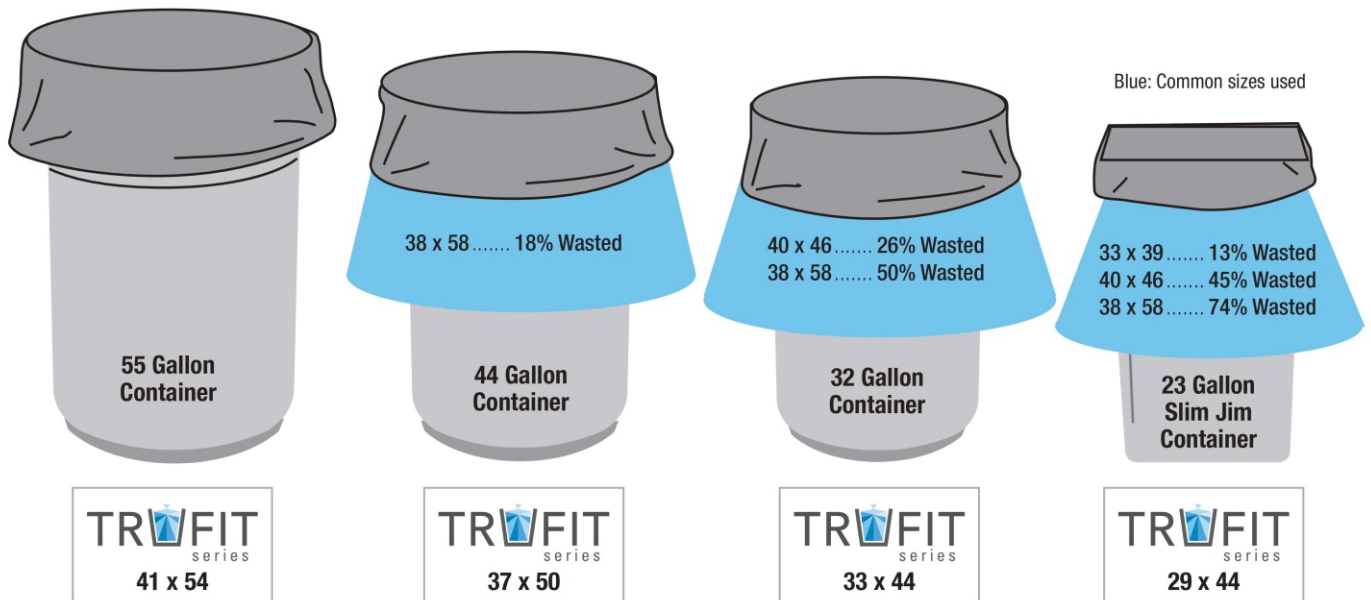
**Slim Jim**  
23 Gallon  
HDPE  
LLDPE  
REPRO



**Round Receptacle**  
32, 44 and 55  
GALLON  
HDPE  
LLDPE  
REPRO



**King Kan**  
65 Gallon  
REPRO





# Premium LLD

## Product Features

- Made with prime resin blends
- Superior tear and puncture resistance
- Leak-proof star seal
- Packed on coreless rolls for easy dispensing
- White color provides clean appearance
- Range of gauges for various applications

### Black Coreless Rolls

ITEM NUMBER	BAG WIDTH / LENGTH	COLOR	BAG GAUGE	CASE COUNT	CASE PACK PUT UP	MAX. DRY LOAD CAP.	GALLON CAP.	SKID COUNT	ROLLS/ CASE*	BAGS/ ROLL*
RST24236B	24 23	Black	0.6	500	CORELESS	20 lbs	7-10	84	10	50
RST24326B	24 32	Black	0.6	500	CORELESS	20 lbs	12-16	77	10	50
RST3036LB	30 36	Black	0.65	200	CORELESS	40 lbs	20-30	91	10	20
RST3036B	30 36	Black	0.75	200	CORELESS	50 lbs	20-30	91	10	20
RST3036HB	30 36	Black	0.9	200	CORELESS	60 lbs	20-30	84	10	20
RST3339LB	33 39	Black	0.65	150	CORELESS	40 lbs	33	91	6	25
RST3339B	33 39	Black	0.75	150	CORELESS	50 lbs	33	91	6	25
RST3858LB	38 58	Black	0.65	100	CORELESS	40 lbs	60	91	5	20
RST3858B	38 58	Black	0.75	100	CORELESS	50 lbs	60	91	5	20
RST4046LB	40 46	Black	0.65	100	CORELESS	40 lbs	40-45	91	5	20
RST4046B	40 46	Black	0.75	100	CORELESS	50 lbs	40-45	91	5	20
RST4347LB	43 47	Black	0.65	100	CORELESS	40 lbs	56	91	5	20
RST4347B	43 47	Black	0.75	100	CORELESS	50 lbs	56	91	5	20

### White Coreless Rolls

ITEM NUMBER	BAG WIDTH / LENGTH	COLOR	BAG GAUGE	CASE COUNT	CASE PACK PUT UP	MAX. DRY LOAD CAP.	GALLON CAP.	SKID COUNT	ROLLS/ CASE*	BAGS/ ROLL*
RST24326W	24 32	White	0.6	500	CORELESS	20 lbs	12-16	70	10	50
RST3036W	30 36	White	0.75	200	CORELESS	50 lbs	20-30	91	10	20
RST3339W	33 39	White	0.75	150	CORELESS	50 lbs	33	91	6	25
RST3339HW	33 39	White	0.9	150	CORELESS	60 lbs	33	84	6	25
RST3339X1W	33 39	White	1.5	100	CORELESS	90 lbs	33	84	5	20
RST3858W	38 58	White	0.75	100	CORELESS	50 lbs	60	84	5	20
RST3858HW	38 58	White	0.9	100	CORELESS	60 lbs	60	70	5	20
RST3858XHW	38 58	White	1.1	100	CORELESS	80 lbs	60	77	5	20
RST3858X1W	38 58	White	1.5	100	CORELESS	90 lbs	60	63	5	20
RST3858X2W	38 58	White	2	100	CORELESS	100 lbs	60	49	5	20
RST4046W	40 46	White	0.75	100	CORELESS	50 lbs	40-45	91	5	20
RST4046HW	40 46	White	0.9	100	CORELESS	60 lbs	40-45	84	5	20
RST4046XHW	40 46	White	1.1	100	CORELESS	80 lbs	40-45	70	5	20
RST4046X1W	40 46	White	1.5	100	CORELESS	90 lbs	40-45	77	5	20
RST4347W	43 47	White	0.75	100	CORELESS	50 lbs	56	91	5	20
RST4347HW	43 47	White	0.9	100	CORELESS	60 lbs	56	84	5	20
RST4347XHW	43 47	White	1.1	100	CORELESS	80 lbs	56	70	5	20
RST4347X1W	43 47	White	1.5	100	CORELESS	90 lbs	56	63	5	20
RST4347X2W	43 47	White	2	100	CORELESS	100 lbs	56	56	5	20

\*Skid count subject to change based on shipment requirements

## Why Linear Low Density?

- Great for multiple applications with sharp or jagged objects
- Whether used in an office, home or a manufacturing plant, we have a variety of sizes and thicknesses for any application



# Premium LLD



coreless roll

## Product Features

- Made with prime resins
- Superior tear and puncture resistance
- Leak-proof star seal
- Packed on coreless rolls or individually folded
- Ideal for multiple applications where clear bags are needed



individually folded

\*Skid count subject to change based on shipment requirements

## Clear Coreless Rolls

ITEM NUMBER	BAG WIDTH / LENGTH	BAG COLOR	BAG GAUGE	COUNT	CASE PUT UP	MAX. DRY LOAD CAP.	GALLON CAP.	SKID COUNT	ROLLS/ CASE*	BAGS/ ROLL*
RST2423XLC	24 23	Clear	0.35	1000	CORELESS	10 lbs	7-10	84	20	50
RST24236C	24 23	Clear	0.6	500	CORELESS	20 lbs	7-10	70	10	50
RST2432XLC	24 32	Clear	0.35	1000	CORELESS	10 lbs	12-16	77	20	50
RST24326C	24 32	Clear	0.6	500	CORELESS	20 lbs	12-16	77	10	50
RST3036LC	30 36	Clear	0.65	200	CORELESS	40 lbs	20-30	91	10	20
RST3036C	30 36	Clear	0.75	200	CORELESS	50 lbs	20-30	91	10	20
RST3036HC	30 36	Clear	0.9	200	CORELESS	60 lbs	20-30	84	10	20
RST3339LC	33 39	Clear	0.65	150	CORELESS	40 lbs	33	91	6	25
RST3339C	33 39	Clear	0.75	150	CORELESS	50 lbs	33	91	6	25
RST3339HC	33 39	Clear	0.9	150	CORELESS	60 lbs	33	84	6	25
RST3339XHC	33 39	Clear	1.1	250	CORELESS	80 lbs	33	63	10	25
RST3339X1C	33 39	Clear	1.5	100	CORELESS	90 lbs	33	84	5	20
RST3339X2C	33 39	Clear	2	100	CORELESS	100 lbs	33	77	10	10
RST3858LC	38 58	Clear	0.65	100	CORELESS	40 lbs	55	91	5	20
RST3858C	38 58	Clear	0.75	100	CORELESS	50 lbs	55	91	5	20
RST3858HC	38 58	Clear	0.9	100	CORELESS	60 lbs	55	70	5	20
RST3858XHC	38 58	Clear	1.1	100	CORELESS	80 lbs	55	70	5	20
RST3858X1C	38 58	Clear	1.5	100	CORELESS	90 lbs	55	63	5	20
RST3858X2C	38 58	Clear	2	100	CORELESS	100 lbs	55	49	10	10
RST4046LC	40 46	Clear	0.65	100	CORELESS	40 lbs	40-45	91	5	20
RST4046C	40 46	Clear	0.75	100	CORELESS	50 lbs	40-45	91	5	20
RST4046HC	40 46	Clear	0.9	100	CORELESS	60 lbs	40-45	84	5	50
RST4046XHC	40 46	Clear	1.1	125	CORELESS	80 lbs	40-45	70	5	25
RST4046X1C	40 46	Clear	1.5	100	CORELESS	90 lbs	40-45	77	5	20
RST4046X2C	40 46	Clear	2	100	CORELESS	100 lbs	40-45	56	10	10
RST4347LC	43 47	Clear	0.65	100	CORELESS	40 lbs	56	91	5	20
RST4347C	43 47	Clear	0.75	100	CORELESS	50 lbs	56	91	5	20
RST4347HC	43 47	Clear	0.9	100	CORELESS	60 lbs	56	84	5	20
RST4347XHC	43 47	Clear	1.1	100	CORELESS	80 lbs	56	70	5	20
RST4347X1C	43 47	Clear	1.5	100	CORELESS	90 lbs	56	63	5	20
RST4347X2C	43 47	Clear	2	100	CORELESS	100 lbs	56	56	10	10

## Clear Individually Folded

ITEM NUMBER	BAG WIDTH / LENGTH	BAG COLOR	BAG GAUGE	COUNT	CASE PUT UP	MAX. DRY LOAD CAP.	GALLON CAP.	SKID COUNT
ST24236C	24 23	Clear	0.6	500	FOLDED	20 lbs	7-10	63
ST24326C	24 32	Clear	0.6	500	FOLDED	20 lbs	12-16	63
ST3036LC	30 36	Clear	0.65	200	FOLDED	40 lbs	20-30	91
ST3036C	30 36	Clear	0.75	200	FOLDED	50 lbs	20-30	91
ST3036HC	30 36	Clear	0.9	200	FOLDED	60 lbs	20-30	84
ST3339LC	33 39	Clear	0.65	150	FOLDED	40 lbs	33	84
ST3339C	33 39	Clear	0.75	150	FOLDED	50 lbs	33	91
ST3339HC	33 39	Clear	0.9	150	FOLDED	60 lbs	33	84
ST3339XHC	33 39	Clear	1.1	250	FOLDED	80 lbs	33	63
ST3339X1C	33 39	Clear	1.5	100	FOLDED	90 lbs	33	84
ST3339X2C	33 39	Clear	2	100	FOLDED	100 lbs	33	77
ST3858LC	38 58	Clear	0.65	100	FOLDED	40 lbs	55	91
ST3858C	38 58	Clear	0.75	100	FOLDED	50 lbs	55	84
ST3858HC	38 58	Clear	0.9	100	FOLDED	60 lbs	55	70
ST3858XHC	38 58	Clear	1.1	100	FOLDED	80 lbs	55	70
ST3858X1C	38 58	Clear	1.5	100	FOLDED	90 lbs	55	63
ST3858X2C	38 58	Clear	2	100	FOLDED	100 lbs	55	49
ST4046LC	40 46	Clear	0.65	100	FOLDED	40 lbs	40-45	91
ST4046C	40 46	Clear	0.75	100	FOLDED	50 lbs	40-45	91
ST4046HC	40 46	Clear	0.9	100	FOLDED	60 lbs	40-45	84
ST4046XHC	40 46	Clear	1.1	125	FOLDED	80 lbs	40-45	70
ST4046X1C	40 46	Clear	1.5	100	FOLDED	90 lbs	40-45	77
ST4046X2C	40 46	Clear	2	100	FOLDED	100 lbs	40-45	56
ST4347LC	43 47	Clear	0.65	100	FOLDED	40 lbs	56	91
ST4347C	43 47	Clear	0.75	100	FOLDED	50 lbs	56	91
ST4347HC	43 47	Clear	0.9	100	FOLDED	60 lbs	56	84
ST4347XHC	43 47	Clear	1.1	100	FOLDED	80 lbs	56	70
ST4347X1C	43 47	Clear	1.5	100	FOLDED	90 lbs	56	63
ST4347X2C	43 47	Clear	2	100	FOLDED	100 lbs	56	56

# Recycled PGB Series

## Product Features

- Earth-friendly & certified for Recycled Content
- Ideal for the toughest applications
- Superior strength and puncture resistance
- Packed on coreless rolls or individually folded
- Star seal provides extra durability



## Recycled PGB Series

ITEM NUMBER	BAG WIDTH / LENGTH	COLOR	BAG GAUGE	CASE COUNT	CASE PACK PUT UP	MAX. DRY LOAD CAP.	GALLON CAP.	SKID COUNT	ROLLS/ CASE*	BAGS/ ROLL*
PGB-2431	24 23	Black	1	500	FOLDED	40 lbs	7-10	77	10	50
PGB-3231	24 32	Black	1	500	FOLDED	40 lbs	12-16	56	10	50
PGB-4351	26 42	Black	1.5	100	FOLDED	80 lbs	30	91	5	20
PGB-3741	30 36	Black	1	250	FOLDED	65 lbs	20-30	77	10	25
PGB-3751	30 36	Black	1.5	250	FOLDED	80 lbs	20-30	56	10	25
PGB-3771	30 36	Black	1.5 EQ	200	FOLDED	75 lbs	20-30	77	10	20
PGB-4041	33 39	Black	1	250	FOLDED	65 lbs	33	63	10	25
PGB-4051	33 39	Black	1.5	100	FOLDED	80 lbs	33	84	5	20
PGB-4061	33 39	Black	2	100	FOLDED	95 lbs	33	77	10	10
PGB-4071	33 39	Black	1.50 EQ	100	FOLDED	75 lbs	33	91	5	20
PGB-4081	33 39	Black	2.00 EQ	100	FOLDED	85 lbs	33	70	10	10
PGB-6041	36 58	Black	1	100	FOLDED	65 lbs	55	70	5	20
PGB-6051	36 58	Black	1.5	100	FOLDED	80 lbs	55	63	5	20
PGB-6061	36 58	Black	2	100	FOLDED	95 lbs	55	56	10	10
PGB-6071	36 58	Black	1.50 EQ	100	FOLDED	75 lbs	55	77	5	20
PGB-6081	36 58	Black	2.00 EQ	100	FOLDED	85 lbs	55	56	10	10
PGB-6141	38 58	Black	1	100	FOLDED	65 lbs	60	70	5	20
PGB-6151	38 58	Black	1.5	100	FOLDED	80 lbs	60	50	5	20
PGB-6161	38 58	Black	2	100	FOLDED	95 lbs	60	49	10	10
PGB-6171	38 58	Black	1.50 EQ	100	FOLDED	75 lbs	60	77	5	20
PGB-6181	38 58	Black	2.00 EQ	100	FOLDED	85 lbs	60	56	10	10
PGB-4631	40 46	Black	1	100	FOLDED	65 lbs	40-45	84	5	20
PGB-4651	40 46	Black	1.5	100	FOLDED	80 lbs	40-45	77	5	20
PGB-4661	40 46	Black	2	100	FOLDED	95 lbs	40-45	56	10	10
PGB-4671	40 46	Black	1.50 EQ	100	FOLDED	75 lbs	40-45	70	5	20
PGB-4681	40 46	Black	2.00 EQ	100	FOLDED	85 lbs	40-45	63	10	10
PGB-4741	43 47	Black	1	100	FOLDED	65 lbs	56	70	5	20
PGB-4751	43 47	Black	1.5	100	FOLDED	80 lbs	56	63	5	20
PGB-4761	43 47	Black	2	100	FOLDED	95 lbs	56	56	10	10
PGB-4771	43 47	Black	1.50 EQ	100	FOLDED	75 lbs	56	70	5	20
PGB-4781	43 47	Black	2.00 EQ	100	FOLDED	85 lbs	56	63	10	10
PGB-5041	46 50	Black	1	100	FOLDED	65 lbs	60	70	5	20
PGB-4360XH	43 60	Black	1.5	100	FOLDED	80 lbs	FITZALL	56	5	20
PGB-4360XXH	43 60	Black	2	100	FOLDED	95 lbs	FITZALL	35	10	10
PGB-5051	46 50	Black	1.5	100	FOLDED	80 lbs	60	63	5	20

**Note: Due to the recycled content properties, color may vary.**

\*Skid count subject to change based on shipment requirements

\*Indicates roll count when ordering coreless rolls.

Add "R" in front of the item number: Example RPGB-2431

## Why Repro?

- Significantly cheaper than virgin linear low density trash bags
- Strong and durable
- Popular in schools, municipalities, and anywhere else where sharp objects are being thrown away

Minimum 65% pre-consumer recycled LLDPE resin content in our 2 mil, 2 mil eq, and 1.5 mil.

25% pre-consumer recycled LLDPE resin content in our 1.5 mil eq and 1 mil.



# Recycled T Series

## Product Features

- Earth-friendly & certified for Recycled Content
- Reduced nominal gauge without sacrificing bag performance
- Superior strength and puncture resistance
- Packed on coreless rolls or individually folded
- Star seal provides extra durability

### Recycled T Series

ITEM NUMBER	BAG WIDTH / LENGTH		COLOR	BAG GAUGE	CASE COUNT	CASE PACK PUT UP	MAX. DRY LOAD CAP.	GALLON CAP.	SKID COUNT	ROLLS/ CASE*	BAGS/ ROLL*
T-2423-H	24	23	Black	Heavy	500	FOLDED	55 lbs	7-10	70	10	50
T-2432-H	24	32	Black	Heavy	500	FOLDED	55 lbs	12-16	63	10	50
T-3036-H	30	36	Black	Heavy	250	FOLDED	55 lbs	20-30	70	10	25
T-3036-XH	30	36	Black	X-Heavy	200	FOLDED	70 lbs	20-30	70	10	20
T-3036-XXH	30	36	Black	XX-Heavy	100	FOLDED	80 lbs	20-30	84	10	10
T-3339-H	33	39	Black	Heavy	200	FOLDED	55 lbs	33	77	10	20
T-3339-XH	33	39	Black	X-Heavy	200	FOLDED	70 lbs	33	63	10	20
T-3339-XXH	33	39	Black	XX-Heavy	100	FOLDED	80 lbs	33	70	10	10
T-3658-H	36	58	Black	Heavy	100	FOLDED	70 lbs	55	77	5	20
T-3658-XH	36	58	Black	X-Heavy	100	FOLDED	70 lbs	55	70	5	20
T-3658-XXH	36	58	Black	XX-Heavy	100	FOLDED	80 lbs	55	63	10	10
T-3858-H	38	58	Black	Heavy	100	FOLDED	55 lbs	60	70	5	20
T-3858-XH	38	58	Black	X-Heavy	100	FOLDED	70 lbs	60	70	5	20
T-3858-XXH	38	58	Black	XX-Heavy	100	FOLDED	80 lbs	60	56	10	10
T-4047-H	40	46	Black	Heavy	100	FOLDED	55 lbs	40-45	84	5	20
T-4047-XH	40	46	Black	X-Heavy	100	FOLDED	70 lbs	40-45	70	5	20
T-4047-XXH	40	46	Black	XX-Heavy	100	FOLDED	80 lbs	40-45	63	10	10
T-4347-H	43	47	Black	Heavy	100	FOLDED	65 lbs	56	84	5	20
T-4347-XH	43	47	Black	X-Heavy	100	FOLDED	70 lbs	56	70	5	20
T-4347-XXH	43	47	Black	XX-Heavy	100	FOLDED	80 lbs	56	63	10	10
T-4360-XXH	43	60	Black	XX-Heavy	100	FOLDED	80 lbs	FITZALL	49	10	10

**Note: Due to the recycled content properties, color may vary.**

\*Skid count subject to change based on shipment requirements

\*Indicates roll count when ordering coreless rolls.

Add "R" in front of the Item number: Example RT-2423-H



Minimum 65% pre-consumer recycled LLDPE resin content in our XX-Heavy and X-Heavy.

Minimum 25% pre-consumer recycled LLDPE resin content in our Heavy.



# Premium HDPE Natural

## Product Features

- Premium HDPE resins
- Strong HDPE film offers significant source reduction
- Packed on coreless rolls and in plain white boxes
- Excellent odor and moisture barrier
- Star seal provides extra durability
- Clear color ideal for foodservice applications



# Premium HDPE Black

## Product Features

- Made with a blend of Prime and Recycled resins
- Earth-friendly & significant source reduction vs. LLD
- Packed on coreless rolls
- Packed in brown "earth-friendly" boxes
- Excellent odor and moisture barrier
- Black film to hide contents

Black HDPE are cheaper than clear high density bags because they use a blend of virgin and recycled resin. They have true gauge and offer superior strength for various applications.

\*Skid count subject to change based on shipment requirements

### Premium HDPE Natural

ITEM NUMBER	BAG WIDTH / LENGTH	BAG GAUGE	CASE COUNT	CASE PACK PUT UP	MAX. DRY LOAD CAP.	GALLON CAP.	SKID COUNT	ROLLS/ CASE*	BAGS/ ROLL*
R171806N	17 18	6	2000	CORELESS	15 lbs	4	70	40	50
R171808N	17 18	8	2000	CORELESS	20 lbs	4	70	40	50
R202206N	20 22	6	2000	CORELESS	15 lbs	7	70	40	50
R202208N	20 22	8	2000	CORELESS	20 lbs	7	70	40	50
R242406N	24 24	6	1000	CORELESS	15 lbs	7-10	70	20	50
R242408N	24 24	8	1000	CORELESS	20 lbs	7-10	70	20	50
R243306N	24 33	6	1000	CORELESS	15 lbs	12-16	70	20	50
R243308N	24 33	8	1000	CORELESS	20 lbs	12-16	70	20	50
R303708N	30 37	8	500	CORELESS	20 lbs	30	70	10	50
R303710N	30 37	10	500	CORELESS	30 lbs	30	70	10	50
R303713N	30 37	13	500	CORELESS	50 lbs	30	70	10	50
R303716N	30 37	16	500	CORELESS	75 lbs	30	70	10	50
R334008N	33 40	8	500	CORELESS	20 lbs	33	70	10	50
R334011N	33 40	11	500	CORELESS	35 lbs	33	70	10	50
R334013N	33 40	13	500	CORELESS	50 lbs	33	70	10	50
R334016N	33 40	16	250	CORELESS	75 lbs	33	70	10	25
R334017N	33 40	17	250	CORELESS	80 lbs	33	70	10	25
R334019N	33 40	19	250	CORELESS	85 lbs	33	70	10	25
R334022N	33 40	22	250	CORELESS	85 lbs	33	70	10	25
R366012N	36 60	12	200	CORELESS	45 lbs	55	70	8	25
R366014N	36 60	14	200	CORELESS	55 lbs	55	70	8	25
R366017N	36 60	16	200	CORELESS	80 lbs	55	70	8	25
R366022N	36 60	22	150	CORELESS	85 lbs	55	70	10	15
R374612N	37 46	12	250	CORELESS	45 lbs	44	70	10	25
R374614N	37 46	14	250	CORELESS	55 lbs	44	70	10	25
R374616N	37 46	16	250	CORELESS	75 lbs	44	70	10	25
R386012N	38 60	12	200	CORELESS	45 lbs	60	70	8	25
R386014N	38 60	14	200	CORELESS	55 lbs	60	70	8	25
R386016N	38 60	16	200	CORELESS	75 lbs	60	70	8	25
R386017N	38 60	17	200	CORELESS	80 lbs	60	70	8	25
R386022N	38 60	22	150	CORELESS	85 lbs	60	70	10	15
R404810N	40 48	10	250	CORELESS	30 lbs	40-45	70	10	25
R404812N	40 48	12	250	CORELESS	45 lbs	40-45	70	10	25
R404814N	40 48	14	250	CORELESS	55 lbs	40-45	70	10	25
R404816N	40 48	16	250	CORELESS	75 lbs	40-45	70	10	25
R404817N	40 48	17	250	CORELESS	80 lbs	40-45	70	10	25
R404819N	40 48	19	200	CORELESS	85 lbs	40-45	70	8	25
R404822N	40 48	22	150	CORELESS	85 lbs	40-45	70	10	15
R434812N	43 48	12	200	CORELESS	45 lbs	56	70	8	25
R434814N	43 48	14	200	CORELESS	55 lbs	56	70	8	25
R434816N	43 48	16	200	CORELESS	75 lbs	56	70	8	25
R434817N	43 48	17	200	CORELESS	80 lbs	56	70	8	25
R434822N	43 48	22	150	CORELESS	85 lbs	56	70	10	15
R486024N	48 60	24	100	CORELESS	90 lbs	63	70	10	10

### Extra Strong HDPE Black

ITEM NUMBER	BAG WIDTH / LENGTH	BAG COLOR	BAG GAUGE	CASE COUNT	CASE PACK PUT UP	MAX. DRY LOAD CAP.	GALLON CAP.	SKID COUNT
R334013K	33 40	Black	13	500	CORELESS	50 lbs	33	70
R334016K	33 40	Black	16	250	CORELESS	75 lbs	33	70
R374614K	37 46	Black	14	250	CORELESS	55 lbs	44	70
R374616K	37 46	Black	16	250	CORELESS	75 lbs	44	70
R386014K	38 60	Black	14	200	CORELESS	55 lbs	60	70
R386016K	38 60	Black	16	200	CORELESS	80 lbs	60	70
R386022K	38 60	Black	22	150	CORELESS	85 lbs	60	70
R404814K	40 48	Black	14	250	CORELESS	55 lbs	45	70
R404816K	40 48	Black	16	250	CORELESS	75 lbs	45	70
R404819K	40 48	Black	19	200	CORELESS	85 lbs	45	70
R404822K	40 48	Black	22	150	CORELESS	85 lbs	45	70
R434814K	43 48	Black	14	200	CORELESS	55 lbs	56	70
R434816K	43 48	Black	16	200	CORELESS	75 lbs	56	70
R434822K	43 48	Black	22	150	CORELESS	85 lbs	56	70

# Value HDPE Natural

## Product Features

- Premium HDPE resins
- Industry standard tolerance to reduce waste
- Strong HDPE film offers significant source reduction
- Packed on coreless rolls and in plain white boxes
- Excellent odor and moisture barrier



- Clear color ideal for foodservice applications
- Star seal provides extra durability

## Why Value High Density?

- Reduces landfill waste by over 10%



- Industry standard tolerances on gauge and size to compete with imports!
- Quality raw materials and manufacturing process ensures reliability

## Value HDPE Natural

ITEM NUMBER	BAG WIDTH / LENGTH		COLOR	CASE COUNT	CASE PACK PUT UP	MAX. DRY LOAD CAP.	GALLON CAP.	SKID COUNT
RCH303710N	30	36	Natural	500	CORELESS	30 lbs	30	70
RCH303713N	30	36	Natural	500	CORELESS	50 lbs	30	70
RCH303716N	30	36	Natural	500	CORELESS	75 lbs	30	70
RCH334016N	33	39	Natural	250	CORELESS	75 lbs	33	70
RCH334017N	33	39	Natural	250	CORELESS	80 lbs	33	70
RCH386014N	38	58	Natural	200	CORELESS	55 lbs	60	70
RCH386016N	38	58	Natural	200	CORELESS	80 lbs	60	70
RCH386022N	38	58	Natural	150	CORELESS	85 lbs	60	70
RCH404812N	40	46	Natural	250	CORELESS	45 lbs	45	70
RCH404814N	40	46	Natural	250	CORELESS	55 lbs	45	70
RCH404816N	40	46	Natural	250	CORELESS	75 lbs	45	70
RCH434812N	43	46	Natural	200	CORELESS	45 lbs	56	70
RCH434814N	43	46	Natural	200	CORELESS	55 lbs	56	70
RCH434816N	43	46	Natural	200	CORELESS	75 lbs	56	70

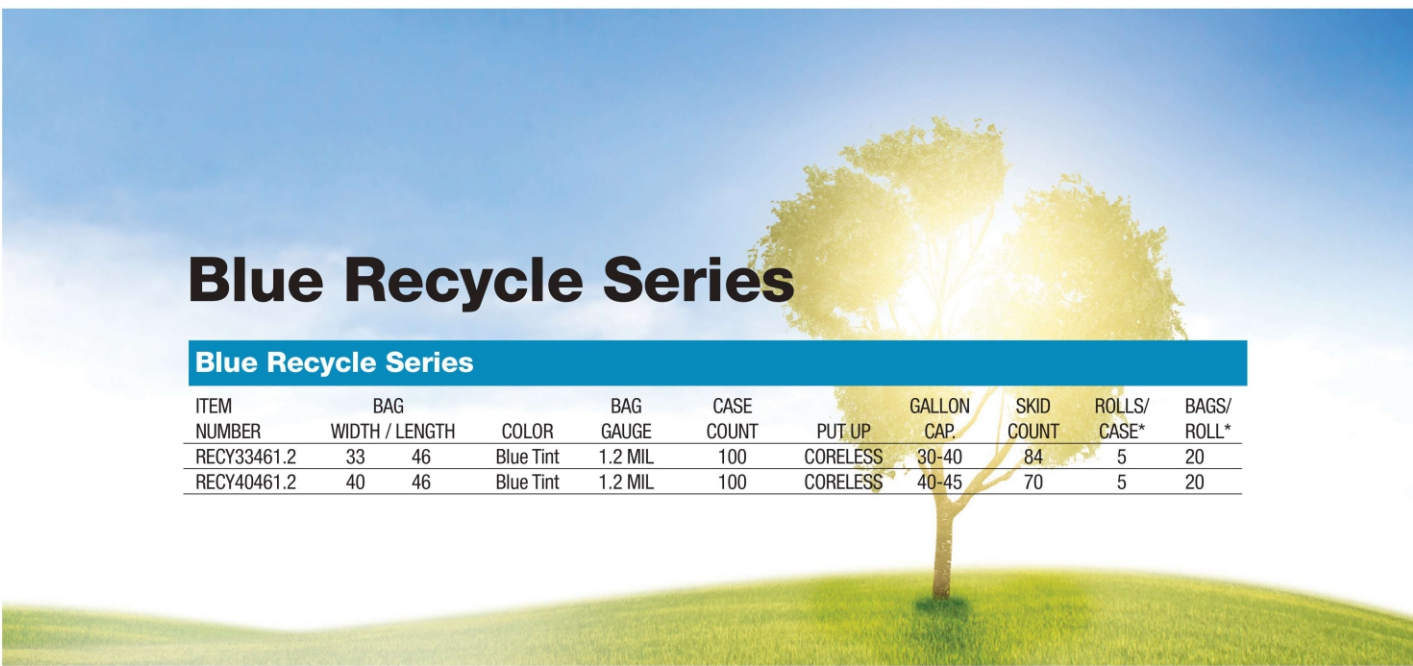


# RCoEx Series

- Made from 2-ply's of prime & recycled LLDPE
- Gray and black color
- Superior stretch and tear resistance of Prime LLDPE combined with "earth-friendly" aspect of Recycled LLDPE
- Packed on coreless mini rolls

## RCoEx Series

ITEM NUMBER	BAG WIDTH / LENGTH		BAG GAUGE	CASE COUNT	MAX. DRY LOAD CAP.	GALLON CAP.	SKID COUNT
RCO-EX3036XH	30	36	Heavy	200	75 lbs	20-30	77
RCO-EX3036XXH	30	36	X-Heavy	100	90 lbs	20-30	84
RCO-EX3339XH	33	39	Heavy	200	75 lbs	33	63
RCO-EX3339XXH	33	39	X-Heavy	100	90 lbs	33	84
RCO-EX3347XH	33	47	Heavy	100	75 lbs	40-45	84
RCO-EX3658XH	36	58	Heavy	100	75 lbs	55	77
RCO-EX3658XXH	36	58	X-Heavy	100	90 lbs	55	63
RCO-EX3858XH	38	58	Heavy	100	75 lbs	55	77
RCO-EX3858XXH	38	58	X-Heavy	100	90 lbs	55	56
RCO-EX4047XH	40	47	Heavy	100	75 lbs	40-45	77
RCO-EX4047XXH	40	47	X-Heavy	100	90 lbs	40-45	63
RCO-EX4347XH	43	47	Heavy	100	75 lbs	56	77
RCO-EX4347XXH	43	47	X-Heavy	100	90 lbs	56	63



# Blue Recycle Series

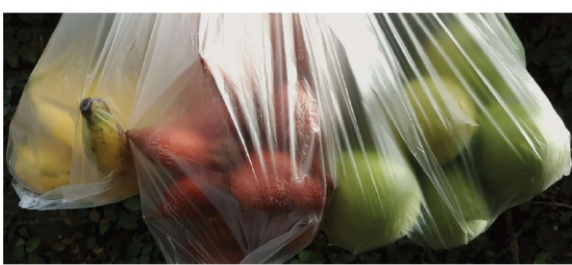
## Blue Recycle Series

ITEM NUMBER	BAG WIDTH / LENGTH		BAG COLOR	BAG GAUGE	CASE COUNT	PUT UP	GALLON CAP.	SKID COUNT	ROLLS/ CASE*	BAGS/ ROLL*
RECY33461.2	33	46	Blue Tint	1.2 MIL	100	CORELESS	30-40	84	5	20
RECY40461.2	40	46	Blue Tint	1.2 MIL	100	CORELESS	40-45	70	5	20

\*Skid count subject to change based on shipment requirements

# Specialty Bags

## Poly Food Storage Bags



## Poly Food Storage Bags (clear)

ITEM NUMBER	BAG SIZE	BAG GAUGE	CASE COUNT
NF428	4 x 2 x 8	0.65	1000
NF4212	4 x 2 x 12	0.65	1000
NF5547519	5.5 x 4.75 x 19	0.75	1000
NF6315	6 x 3 x 15	0.70	1000
NF8418	8 x 4 x 18	0.75	1000
NF8418-H	8 x 4 x 18	1.00	1000
NF21635	21 x 6 x 35	0.90	500

## Bun Rack Covers

SB5280	52 x 80	15 mic	50/rl
--------	---------	--------	-------

# Medical Liners



## YELLOW INFECTIOUS LINEN BAGS ON ROLLS (PRINTED)

ITEM NUMBER	BAG WIDTH / LENGTH		BAG GAUGE	CASE COUNT	MAX. DRY LOAD CAP.	GALLON CAP.	SKID COUNT	ROLLS/ CASE*	BAGS/ ROLL*
IL3339	33	39	1.30	200	65 lbs	33	63	10	20
IL4047	40	47	1.30	150	75 lbs	45	56	10	15

Our Yellow Infectious Linen bags are printed with a six-inch Bio-Hazard symbol, and warning message is in English and Spanish. Printing is in black ink, one side, random repeat. All bags are supplied with star seal bottoms and are packed in rugged, white corrugated cartons.

## BLUE SOILED LINEN BAGS ON ROLLS (PRINTED)

ITEM NUMBER	BAG WIDTH / LENGTH		BAG GAUGE	CASE COUNT	MAX. DRY LOAD CAP.	GALLON CAP.	SKID COUNT	ROLLS/ CASE*	BAGS/ ROLL*
SL2431	24	31	1.30	200	65 lbs	12-16	84	10	20
SL3043	30	43	1.30	150	75 lbs	45	70	10	15
SL3750	37	50	1.30	150	70 lbs	44	56	10	15

Our Blue Soiled Linen bags are printed with a warning message in English and Spanish. Printing is in black ink, one side, random repeat. All bags are supplied with star seal bottoms and are packed in rugged, white corrugated cartons.

## RED INFECTIOUS WASTE BAGS ON ROLLS (PRINTED)

ITEM NUMBER	BAG WIDTH / LENGTH		BAG GAUGE	CASE COUNT	MAX. DRY LOAD CAP.	GALLON CAP.	SKID COUNT	ROLLS/ CASE*	BAGS/ ROLL*
IW2424	24	24	1.30	500	35 lbs	7-10	56	10	50
IW2431	24	31	1.30	250	35 lbs	12-16	70	10	25
IW3037	30	37	1.30	100	65 lbs	30	91	5	20
IW3043	30	43	1.30	200	65 lbs	30	63	10	20
IW3339	33	39	1.30	200	65 lbs	33	63	10	20
IW3848	38	48	1.30	100	70 lbs	45	70	5	20
IW4047	40	47	1.30	150	75 lbs	45	56	6	25
IW4047H	40	47	2.00	100	100 lbs	45	56	10	10

Our Red Infectious Waste bags are printed with a warning message in English and Spanish. Printing is in black ink, one side, random repeat. All bags are supplied with star seal bottoms and are packed in rugged, white corrugated cartons. **Not available for sale in all states.**

\*Skid count subject to change based on shipment requirements



# Biodegradable Liners

North American Plastics is proud to introduce a series of Biodegradable can liners to satisfy the environmental needs of our customers. In a world filled with waste and byproducts of human consumption, we believe reducing the negative footprint of our products on the environment by offering eco-friendly bags, is simply the right thing to do. Please see our flier for more details.

## High Density Biodegradable Liners

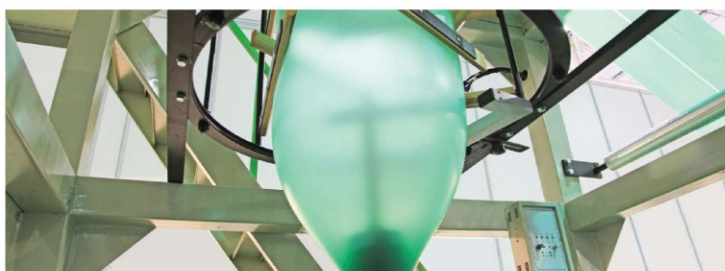
ITEM NUMBER CLEAR	ITEM NUMBER GREEN	SIZE	BAG GAUGE	CASE COUNT	SKID COUNT
DG24336C	DG24336G	24 x 33	6 micron	1000	70
DG303710C	DG303710G	30 x 37	10 micron	500	70
DG374615C	DG374615G	37 x 46	15 micron	250	56
DG404816C	DG404816G	40 x 48	16 micron	250	56
DG385816C	DG385816G	38 x 58	16 micron	200	56
DG434816C	DG434816G	43 x 48	16 micron	200	70

## Low Density Biodegradable Liners

ITEM NUMBER CLEAR	ITEM NUMBER GREEN	SIZE	BAG GAUGE	CASE COUNT	SKID COUNT
DG2432HVYC	DG2432HVG	24 x 32	0.6 mil	500	70
DG3036HVYC	DG3036HVG	30 x 36	0.6 mil	250	91
DG3339HVYC	DG3339HVG	33 x 39	0.8 mil	250	77
DG3746XHVYC	DG3746XHVYG	37 x 46	1.0 mil	100	84
DG4046XHVYC	DG4046XHVYG	40 x 46	1.2 mil	100	70
DG4347XHVYC	DG4347XHVYG	43 x 47	1.2 mil	100	70
DG3858XHVYC	DG3858XHVYG	38 x 58	1.2 mil	100	77
DG2432XHVYC	DG2432XHVYG	24 x 32	1.0 mil	500	56
DG3036XHVYC	DG3036XHVYG	30 x 36	1.0 mil	250	77
DG3339XHVYC	DG3339XHVYG	33 x 39	1.2 mil	250	91
DG3746XXHVYC	DG3746XXHVYG	37 x 46	1.7 mil	100	63
DG4046XXHVYC	DG4046XXHVYG	40 x 46	1.7 mil	100	63
DG4347XXHVYC	DG4347XXHVYG	43 x 47	1.7 mil	100	63
DG3858XXHVYC	DG3858XXHVYG	38 x 58	1.7 mil	100	56

## Blue Recycled Liners

ITEM NUMBER		SIZE	BAG GAUGE	CASE COUNT	SKID COUNT
DG404816RB	<b>Blue HD</b>	40 x 48	16 micron	250	56
DG4048XHVYRB	<b>Blue LD</b>	40 x 48	1.2 mil	100	70



Note:  
35 case minimum per size.  
Meets standards outlined in ASTM D5511 and D5526.

# TUFF20 and Tuff32 Contractor Bags



## Product Features

- Proven quality and strength backed by three decades in the plastics business
- Heavy 3 mil thickness for the toughest applications
- Maximum tear and puncture resistance
- Ideal for heavy and sharp objects
- Made from blend of recycled and prime resins
- 20 bags or 32 bags per case
- Twist ties included
- 42 gallon capacity
- Dimensions: 2'9" x 4'

**3 mil thickness for the toughest applications.**

**Eco-friendly and made from recycled materials.**



These bags are ideal for contractors who rely on quality. We guarantee they will hold the toughest trash. They are made with a blend of recycled resin and high-quality virgin materials to offer superior strength and stretch. They are also ideal for landscapers, building service contractors, and others who need more than a regular can liner.

# Capabilities

## HDPE Product Capabilities

### Custom Products

#### Pallet Covers & Gaylord

**Liners:** These products can be manufactured out of Black Repro or Prime LLD resin.

**Box Liners:** Liners are made from linear low and high density resins, and can be used in industrial, food processing, and retail applications.

**Other Products:** These include drum liners, ASBESTOS bags, tubing and sheeting, dough bags, and more.

**Materials:** LLDPE, Hexene, HDPE, Blends, Additives Recycled/Pre-Consumer, Tints & Colors

\*All Custom Products are made to order and minimum quantities apply.

HDPE Product Capabilities		
PRODUCT	MONO LAYER WIDTH MIN-MAX	MONO LAYER GAUGE MIN-MAX
Sleeves, Tubing and Flat Tubular w/o Seal		
3" Cores	30-43"	14 mic to 33 mic
GUSSETED BAGS		
Min Gusset Size		
4"	30-48"	14 mic to 33 mic
GUSSETED TUBING		
Min Gusset Size		
4"	30-48"	14 mic to 33 mic
STAR SEAL		
Coreless	17-55"	6 mic to 33 mic
STAR SEAL		
Individually Folded	30-43"	10 mic to 33 mic
ADDITIONAL CAPABILITIES		
VENTED		
Star Seal	33-55"	14 mic to 33 mic
GUSSETED SEAL	38-48"	14 mic to 33 mic
Flat Seal	38-43"	14 mic to 33 mic
3" Core		14 mic to 33 mic
PRINT		
Flat	24-30"	10 mic+
Star Seal	33-43"	14 mic+

HDPE Product Capabilities		
CAPABILITY	DESCRIPTION	HDPE
Sleeves, Tubing and Flat Tubular w/o Seal	Width Min	30"
	Width Max	43"
3" Core	Gauge Min	14 mic
	Gauge Max	33 mic
GUSSETED BAGS		
Min Gusset Size	Width Min	30"
	Width Max	48"
4"	Gauge Min	14 mic
	Gauge Max	33 mic
GUSSETED TUBING		
Min Gusset Size	Width Min	30"
	Width Max	48"
4"	Gauge Min	14 mic
	Gauge Max	33 mic
STAR SEAL		
Coreless	Width Min	17"
	Width Max	55"
	Gauge Min	6 mic
	Gauge Max	33 mic
STAR SEAL		
Individually Folded	Width Min	30"
	Width Max	43"
	Gauge Min	10 mic
BAG LENGTH		
	Size Min	17"
GUSSETED AND FLAT		
3" Core	.6 mil to 2 mil	24-38"
LLDPE/ALL		
Star Seal	.6 mil to 2 mil	38"+
LLDPE/ALL		
Gusset	.6 mil to 2 mil	38" + / 3" Core
Flat	.6 mil to 3 mil	38" + / 3" Core



Tubular Bags



Gusseted Bags



Center Fold Bags



Center Slit Gusseted



Center Fold Sheeting



Gusseted Tubing



Lay Flat Tubing



Sleeve



Center-Slit Film

## LLDPE Product Capabilities

### LLDPE Product Capabilities

PRODUCT	MONO LAYER WIDTH MIN-MAX	MONO LAYER GAUGE MIN-MAX	CO-EX WIDTH	CO-EX GAUGE	NOTES
Flat Seal Bags	17 - 66"	.90 mil to 8 mil	30 - 51"	.90 mil to 7 mil	Flat Over 55" Cored Roll
Center Fold Bags	18 - 66"	.90 to 7 mil	30 - 51"	.90 mil to 7 mil	
Gusseted Seal Bags	4" x 2" x 8" - 104"	.65 mil to 8 mil	30 - 51"	.65 mil to 6 mil	66" Max Face Width
Star Seal Bags	20 - 72"	.45 mil to 2 mil	30 - 51"	.55 mil to 2 mil	
Tubing, Center Slit Film	18 - 104"	1 mil to 7 mil	30 - 51"	1 mil to 7 mil	66" Max Face Width
Food Bags	4" x 2" x 8" - 21" x 6" x 35"	.65 mil to 2 mil	N/A	N/A	
ADDITIONAL CAPABILITIES		REPEAT STYLE	DIMENSION CAPACITIES		
Pin Hole	Random	66" Face Width Max			
Vented	Random & Registered	56" Face Width Max			
Printed	Random	17 - 60" Film; Print Face Max: 17 x 40" Print Repeat 20"			

**Shop - Save - Smile!**



**Manufacturers of quality can liners and custom packaging.**

**\$ave Smart**  
Products.com  
[www.savesmartproducts.com](http://www.savesmartproducts.com)  
678-910-6979

**Safety, Sanitary, Janitorial & Specialty Supplies**